



Telford & Wrekin

COUNCIL

Date: Wednesday, 1 February 2017

Time: 1.30 pm

Venue: Shrewsbury Room, Shirehall, Abbey Foregate, Shrewsbury, Shropshire, SY2 6ND

Contact: Amanda Holyoak, Committee Officer
Tel: 01743 252718
Email: amanda.holyoak@shropshire.gov.uk

Jessica Tangye, Senior Democratic and Scrutiny Services Officer
Tel: 01952 382061
Email: Jessica.Tangye@telford.gov.uk

JOINT HEALTH OVERVIEW AND SCRUTINY COMMITTEE

TO FOLLOW REPORT (S)

4 **Update on the Sustainability of Services Provided by Shrewsbury and Telford Hospitals NHS Trust (SATH) (Pages 1 - 8)**

To receive a verbal update from the Chief Executive of SaTH on the current position regarding sustainability of services at the Princess Royal Hospital and the Royal Shrewsbury Hospital.

Members of the Cancer Team will also be present to explain the risks associated with NHS England proposals for Modernising Radiotherapy Services.

The attached document is an information pack on Urgent Care Centres

Information pack for the Joint Health Overview & Scrutiny Committee

Page 1

Agenda Item 4



Proud To **Care**
Make It **Happen**
We Value **Respect**
Together We **Achieve**

Aims of this presentation

To provide:

- Overview of the services on each site
- Proposed UCC model as described in the OBC

Page 2

Emergency Site

B PRH



- Emergency Department
- Urgent Care Centre
- Critical Care Unit (ICA, HDU, ITU)
- Ambulatory Emergency Centre (AEC)
- Approximately 510 inpatient beds including:
 - Acute Stroke Unit
 - Coronary Care Unit
 - Women and Children's
 - Orthopaedic Trauma
 - Acute medicine
 - Complex planned surgery
- Outpatients
- Diagnostics
- Day Case Renal Unit
- Oncology/Haematology – chemotherapy

Page 3

C RSH



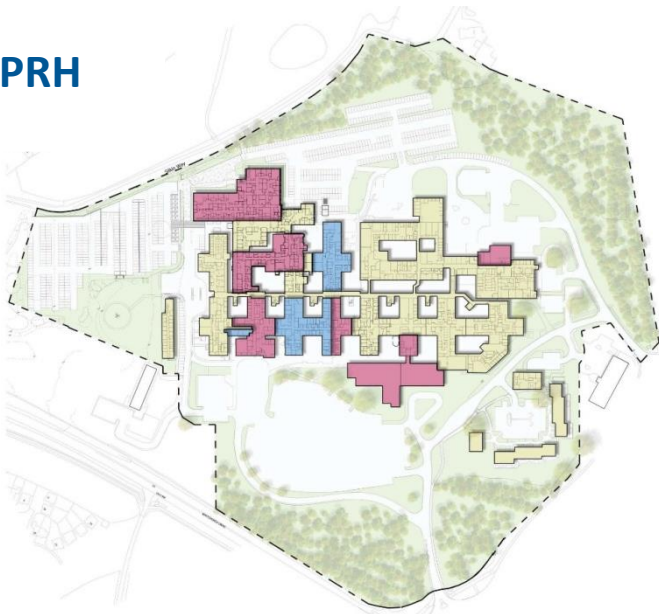
Planned Care Site

B RSH



- Diagnostic and Treatment Centre
- Urgent Care Centre
- Elective and Day Case Surgery
- Endoscopy
- Approximately 350 beds (240 inpatient beds and 110 day case beds) including:
 - Elective Orthopaedics
 - Breast Service
 - Frailty and Elderly Care
 - Rehabilitation

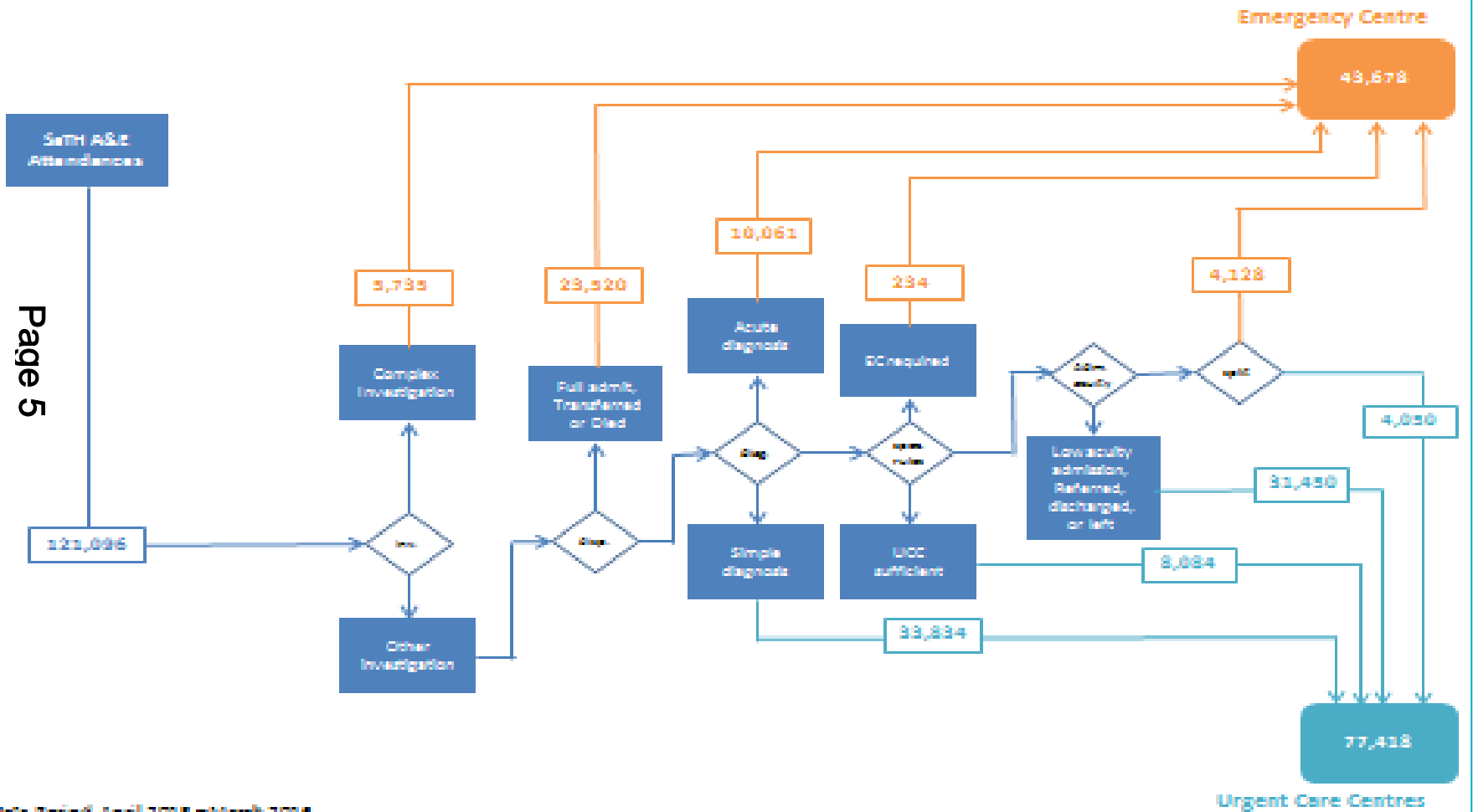
C PRH



- Outpatients
- Diagnostics
- Day Case Renal Unit
- Oncology/Haematology – chemotherapy

Future Fit algorithm applied to 2015/2016 SaTH activity

Allocation of 2015/16 A&E Attendances

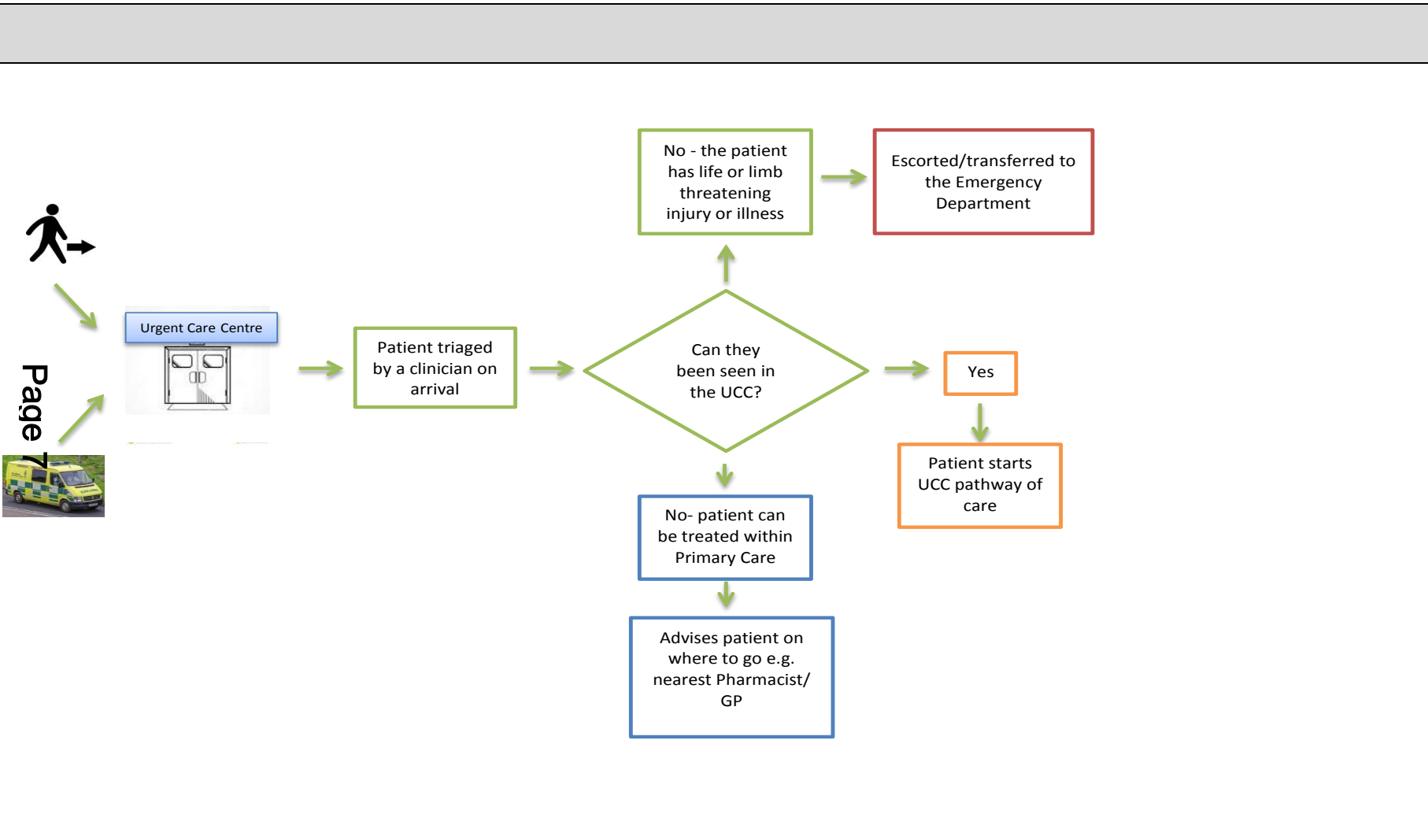


Data Period: April 2015 - March 2016

Urgent Care Centre

- The original Future Fit algorithm has been applied to the Trust's activity data for 2015/16 to determine whether patients need emergency or urgent care services
- Complaints/conditions to be treated at the Emergency Department include:
 - anaphylaxis
 - stroke
 - severe chest pain
 - multiple trauma
 - compound fractures
 - moderate burns
 - poisoning
- Complaints/conditions to be treated within Urgent Care services are:
 - sprains and simple fractures
 - cuts and scrapes
 - asthma
 - ENT conditions
 - scalds
 - bites and stings

Urgent Care Centre Pathway



Page 7



Facilities

	RSH	PRH	Total
UCC Adult cubicles	7	7	14
UCC Children's cubicles	4	4	8
UCC Adult waiting places	30	30	60
UCC Children's waiting places	15	15	30

- Dedicated quiet areas
- Facilities for vulnerable patients
- Separate pathways for children and adults